

# KENNEDY®

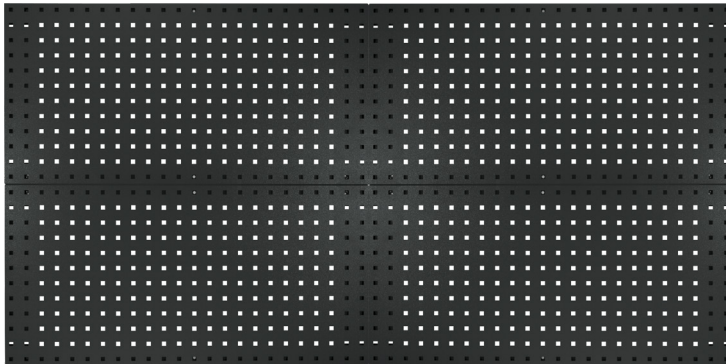
Provides visualization and organizational effectiveness for a productive work place.



## VTC SERIES Visual Tool Control

### Features

- Hole Spacing is 1-1/2"
- Reinforced steel panels with square perforations.
- Attach to variety of surfaces.
- Locking clips fasten toolholders to panels.
- (4) Panels cover 18 Sq. Ft of Wall Space
- (2) Panels cover 9 Sq. Ft of Wall Space



**50004 4 Panel Set**  
18" W x 1/2" D x 36" H

- 60-pc Toolholder Hook Set (99853)

**50002 2 Panel Set**  
18" W x 1/2" D x 36" H



#### Vertical End

- 99820
- 99821
- 99822



#### Angled End

- 99823
- 99824
- 99825



#### Double Hook

- 99827
- 99828
- 99829
- 99830



#### Spring Clips

- 99833
- 99835
- 99836



#### Plier Hook

- 99831
- 99832



#### Cable Loop

- 99876



#### 12-Screwdriver Rack

- 99840



#### 9-Key Hex Rack

- 99842



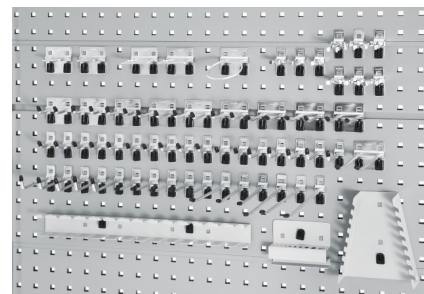
#### 8-Wrench Rack

- 99841

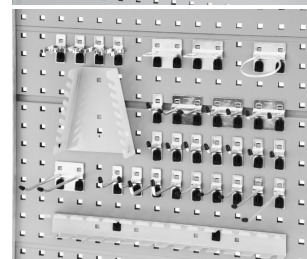


#### Parts Shelf

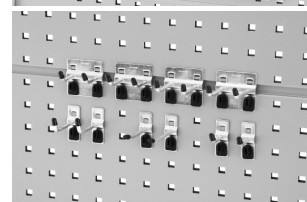
- 99846



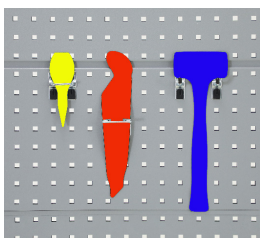
**99853**  
60 pc. Hook Set



**99852**  
30 pc. Hook Set



**99851**  
10 pc. Hook Set



#### Magnetic Vinyl Tool Control Sheets

24 W x 18" D x 1/32" Thick

- Trace and cut out tool shapes
- 99814-Red
- 99815-Blue
- 99816-White
- 99817-Yellow