

LOCKS & KEYS

Tubular High Security Lock and Key Sets

- All locks can be keyed alike.
- Key/Lock Numbers: KEN1 - KEN200
- KEN 047, KEN125 and KEN 151 are no longer available
- Lock sets come with lock, 2 keys and C-Clip
- R,P,Q,L series keys and locks are discontinued and NOT available.

Hook Cam No. 80401
 Fits: 3611, 56211, 526, 520, 620, 360, 266, 263

Long Cam No. 80402
 Fits: MC22, MC28, 182X, 202X, 302X, 382X

No Cam No. 80403
 Fits: Roller Cabinets: (All 27", 29" and 34") 348X, 297X, 295X, 315X, 310X, 378X, 277X, 275X, 273X, 21040, 21040X
 Hang on Models: 185X, 205X
 Chest Base Models: 2602, 2603, 2604, 5150
 Mechanics' Chests: 285X, 2805X

Flat Key Only (Standard): T1-T350 No. 80965

- Flat key locks have been discontinued.
- T10 is no longer available.
- K, KY, and S series keys and locks are discontinued and NOT available.

80401
(hook cam)



80402
(long cam)



80403
(no cam)



80404



80965



PAINT



Spray Cans
 Brown No. 80860

Touch-up Bottles
 Red No. 82173
 Brown No. 82174

Touch Up Paint

- Touch up scratches and minor abrasions.
- All paints create a smooth finish
- 12 ounce aerosol can or 0.6 ounce liquid bottle.
- Not for large area coverage.

FELT DRAWER LINERS

Part #		Fits Models:
80912	Felt Kit	Machinists' Chest 520
80913	Felt Kit	Machinists' Chest 526
80914	Felt Kit	Machinists' Chest 52611
80915	Felt Kit	Machinists' Base MC22
80916	Felt Kit	Machinists' Base MC28
80918	Felt Kit	Machinists' Chest 620



- Pre-Cut Felt Kit
- Adhesive & Drawers not included
- Felt Installation: Recommend using a water-based glue such as Elmer's® glue.

DROP FRONTS

Part #		Fits Models:	Drop Front Dimensions:
80422	Drop Front Panel	520 & 620	18.954 x 8.422
80423	Drop Front Panel	52611	25.563 x 12.859
80424	Drop Front Panel	3611	23.96 x 13.984
80425	Drop Front Panel	526	25.563 x 8.438

- Drop Front Panel may not fit older units.
- Measure opening prior to ordering.



For additional images and specifications go to:

KENNEDYMFG.COM

SLIDES

Part #		Fits Models:	H x L
80887	Standard Friction, Welded in Drawer Channel	620, 520, 526, 52611, MC22, MC28, 220	7-1/2" L x 5/8" W
80888	Standard Friction, Welded in Drawer Channel	2005, 2812, 263, 266, 360, 3611, 2602, 2603, 2604, 2902, 5150	10-1/2" L x 1" W
80889	Standard Friction, Welded in Drawer Channel	Fits Models 27", 29" and 34" Roller Cabinets manufactured prior to 1996. Fits 6 & 12 Drawer Versa-Benches.	14-3/4" L x 1-1/4" W
82183	Ball-Bearing	For use with 18" D (K1800 Series) and 20" D (K2000 Series) Cabinets. Replaces existing ball bearing slides. Or, interchangeable with friction slides in units manufactured after April, 1996.	16-5/16" L x 1-13/16" H
82186	Ball-Bearing	For use with 24" D (K2400 Series) cabinets. Replaces existing ball bearing slides. Or, interchangeable with friction slides in units manufactured after April, 1996.	22" L X 1 3/16" H
82187	Snap-In Friction	Snap In Slides: 285, 273, 275, 277, 376, 378, 310, 315, 185, 386. * For Use With Cabinets Manufactured BETWEEN April 1996 and November 2021 *	Drawer Slide-16-1/4" L False End Slide-14-3/4" L Male Slide-14-3/4" L
82189	Snap-In Friction	Snap in Slides: 2805, 2905, 3405, 293, 295, 297, 348, 205, 306. * For Use With Cabinets Manufactured BETWEEN April 1996 and November 2021 *	Drawer Slide-18-1/4" L False End Slide-14-3/4" L Male Slide-14-3/4" L
80955	Friction Spring Clips	Fits: Friction Slides for 52611, 526, 520, 620, MC22, MC28	2 1/2" L / Set of 4
80956	Friction Spring Clips	Fits: 273, 275, 277, 295 and 297 Roller Cabinet Bodies with Friction Slides Fits: 360, 3611, 266, 263, 2602, 2603, 2604, 5150	3" L / Set of 4

80887 / 80888 / 80889



82183 / 82186



82187 / 82189



80955



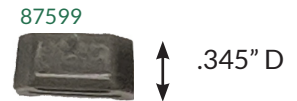
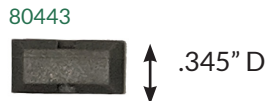
80956



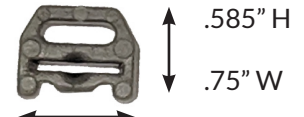
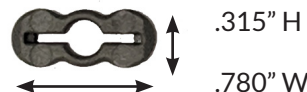
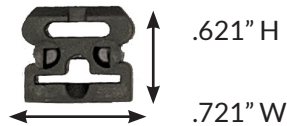
*If your drawer does not have a center hole cut out along the side where the slide adheres, then you will need to purchase a ball bearing slide

Slide Detents

For 120 lb Ball Bearing Slides.



Note: Compare image and dimensions to current detent for match.



MISCELLANEOUS



Bullet Catch

Fits: 520, 526, 620, 52611, 3611 No. 87595



Lid Stays

Fits: 520, 526, 620, 52611, 220 No. 87373
Fits: 3611, 360, 266, 263 No. 87374



Lock Cam Rods

Fits: 18" Deep Cabinets No. 87371
Fits: 20" Deep Cabinets No. 87372



Stacking Clip No. 81941

(4) Stacking clips with adhesive foam for convenience of stacking product, preventing movement between units.
For use with: 2600B, 2602B, 2603B, 2604B, 5150



Kennedy Logo No. 80957

Must call or email to place an order.
customerservice@kennedymfg.com / 800-413-8665 Option 4

Please note: The Kennedy Signature script logo is not available. This is not an external/replaceable logo.

Part #		Fits Models:	Included:
80807	Ergonomic Handle	Attaches to either side of Kennedy 27", 29" or 34" wide roller cabinets.	Mounting Screws
82245	Push Handle	Fits 27" , 29", 34", or 44" Kennedy Roller Cabinets	Handle / Hardware - Hole Dist: 15-3/4"
87597	Top Handle Kit	Fits: K20, K24, 220, 620, 520, 5220 (Not a replacement for leather handle)	(1) Handle (2) Cletes (4) Rivets
87596	Center & Side Catch Kit	Center Catch Fits: 5220, K20, K24, 1018, 1022 Side Catch Fits: 1018, 1022, 3611, 220, 526, 520, 620, 52611, K24, K20	(1) Center Catch (2) Side Catches (12) Rivets
80910	Chest Handle	Fits: 285X and 2805X	(2) Handles / Mounting Screws
87369	Chest Handle	Fits: 3611, 5150, 266, 360, 263, 2602, 2603, 2604	(2) Handles / Mounting Screws
87368	Chest Handle	Fits: 52611, 526	(2) Handles / Rivets



DRAWER PULLS

To replace original 10" drawer pull and want to convert Kennedy Toolbox to full length drawer pulls, see Full Length Drawer Pull chart below.

Part #	Description	Fits Drawers for these Chests and Cabinet Model Numbers:						
		273X	275X	277X	285X	378X	310X * See Note	315X * See Note
82118	23" Drawer Pull							
82119	25" Drawer Pull	295X	297X	2805X			310X Large Bank is already equipped with 82118	315X Large Bank is already equipped with 82118
82120	30" Drawer Pull	348X						

To replace the current 10" drawer pull, see chart below.

80967	10" Drawer Pull	273X	275X	277X	285X	2805X	295X	297X
		348X	378X	310X (Small Bank)	315X (Small Bank)	21040X	185X	205X
		266	2602	2603	2604	360	5150	263

To replace the current drawer pull for the Mechanics' Chest, see chart below.

80966	5" Drawer Pull	266	360					
-------	----------------	-----	-----	--	--	--	--	--

To replace the current drawer pull for the Machinists' Chest, see chart below.

87090	Brown Pull	52611	526	520	620	MC22	MC28	
80968	Lid Pull	263	266	360				



CASTERS

For additional images and specifications go to:



Part #	Description	Weight Capacity Total	Bearing	Material	Dia.	W	H
80837	5 x 2 Caster Set, (2)R(2)S	1400 lbs	Roller	Rubber	5"	2"	6"
Standard for 293X, 295X, 297X, 2907X, 3407X, 376X, 378X, 310X, 315X, 10491, & 10493 Standard for 10494 & 10495 Roller Cabinets Mfged After 9/6/2016 Fits 21040X, 21041, 21042, 273X, 275X, 277X, 28085, 28087, & 28197 Fits Benchmark® Roller Cabinets Mfged. Before 12/31/02							
80980	6 x 2 Caster Set, (2)R(2)S	2100 lbs.	Roller	Phenolic	6"	2"	7-1/2"
Standard for Benchmark® Roller Cabinets Mfged. Before 12/31/02 Fits 21040, 21041, 21042, 273X, 275X, 277X, 293X, 295X, 297X, 2907X, 3407X, 376X, 378X, 310X, 315X, 10491, 10492, & 10493 Fits 10494 & 10495 Roller Cabinets Mfged After 9/6/2016							
80930	6 x 2 Caster Set, (2)R(2)S	2800 lbs.	Roller	Phenolic	6"	2"	7-1/2"
Standard for 2702MP, 2907MP, 3407MP, 3900MP, 4202MP & Benchmark® Roller Cabinets Mfged. After 1/1/03 Standard for 10494 & 10495 Roller Cabinets Mfged. Before 9/6/2016							
80976	10" Wheel	500 lbs	Roller	Rubber	10"	2-1/4"	-
Standard for 4400MP, 4410, 5207MP, 5300MP, 5804MP							
80841	Versa® Bench Floor Lock	-	-	-	Unlocked Position	8-3/4"	
Standard for Kennedy Versa-Benches® Mfged. Before 2/1/2015						Locked Position	9-3/4"

80837



80980/80930



80976



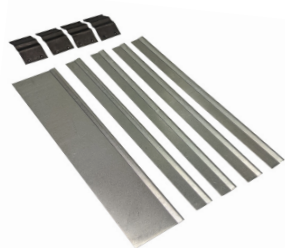
80841



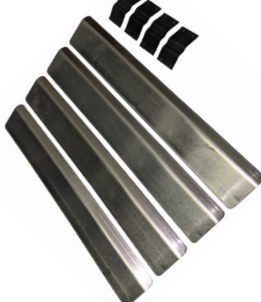
DRAWER DIVIDERS

Part #		Fits Models:	Included:
80850	Metal Drawer Dividers	520, 526, 52611, 620	(4) 7 5/16" L x 5/8" H (1) 7 5/16" L x 1 7/8" H (4) Spring Clips
82230	Metal Drawer Dividers	3611, 263, 266, 360, 2602, 2603, 2604, 5150	(4) 10 5/8" L x 1 3/8" H (4) Spring Clips
82232	Metal Drawer Dividers	310X, 315X, 285X, 273X, 275X, 277X, 378X, 185X	(2) 16 3/8" L x 3" H (2) 16 3/8" L x 1 3/8" H (4) Spring Clips
82234	Metal Drawer Dividers	2805X, 205X, 295X, 297X, 348X	(2) 18 3/8" L x 3" H (2) 18 3/8" L x 1 3/8" H (4) Spring Clips
80959	Divider Clips	Fits 80850, 82230, 82232, 82234 Dividers Kits	2 Pc Package 7/8" H x 1-1/2" W

80850



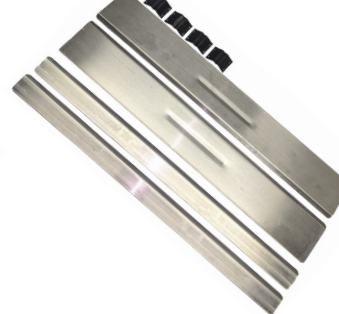
82230



82232



82234



80959



ASSEMBLING YOUR KENNEDY® CABINET

Casters—Assembly requires flat tip screwdriver and ½" socket or ½" open end wrench.

(2) rigid and (2) swivel with toe brakes, bolts, lock washers and hex nuts furnished for assembly to cabinet.

Unit with bottom front panel - open bottom drawer, lift and open panel for caster mounting.

Units with full drawers - bottom drawer must be removed for caster mounting.

Lay cabinet on its back when mounting casters. Line up caster holes to bottom pan or reinforcement rail and fasten with round head of bolt to the outside.

Tubular End Handle – Assembly requires flat tip screwdriver.

Mount end handle on same end as swivel casters.

Bracket holes must line up to double set of holes in body. Attach each bracket with (2) ¼" x ½" screws.



Keep Your Kennedy® Operating Like New

Slides—A light coating of oil on the friction slides will preserve and provide easy movement of parts.

Cleaning of Finish—Your Kennedy wrinkle finish unit can be cleaned periodically with WD-40 or Murphy's Oil Soap. Smooth finish units should be cleaned with a soft cloth, dampened with warm water.

Have you registered your Kennedy®?

Go to www.kennedymfg.com/product-registration/ follow the prompts to file your registration online.



LIMITED WARRANTY

If you are the original end-user purchaser of a new Kennedy steel roller cabinet, steel tool chest, or steel canopy for use with a Kennedy cabinet or tool chest, then you are entitled to a limited lifetime warranty that the product will be free of defects in material or workmanship under normal use and will conform to the description given them by Kennedy. This limited lifetime warranty extends only to the repair or replacement of items found by Kennedy upon examination to be defective in material or workmanship. This limited lifetime warranty covers only parts and materials, not labor, and cannot be assigned by the original end-user purchaser of that product. This limited lifetime warranty does not cover products that are damaged through any intentional or negligent actions, including but not limited to misuse, mishandling, or modification or to products that reach the ends of their useful lives as a result of normal wear and tear.

Warranty Length Exceptions:

Paint - One (1) year

Slides, Casters, Drawer Pulls and Handles - 90 Days

Purchased accessories, locks and locking systems, including electronic locks —One (1) year

Kennedy's liability for any breach of warranty shall be limited to the cost of the repair or replacement of the defective items as described above.

