

Step 10. SLIDE AND DRAWER ASSEMBLY

Note: This unit may be equipped with either I-beam friction slides or ball-bearing slides. Refer to the appropriate instructions below.

I-Beam Friction Slides

Each drawer requires six slide parts, See Fig. 9:

- one 270 DR LH; one 270 DR RH—attaches to drawer
- one FE LH; one FE RH—attaches to inner panel
- two male slides with springs

Note: LH/RH refers to Left and Right Hand—part numbers are marked on a. & b.

1. Start at the bottom row of square holes on right side inner panel. Insert rear horizontal tab of b. (FE RH) into back square hole. Line up center and front tabs with matching square holes and snap **down** into place, locking in the slide.

2. Repeat procedure with remaining four slide parts (FE RH), moving up the panel every other row. See Fig. 10.

3. Repeat above steps 1 and 2 on left side inner panel with five each slide parts (FE LH).

4. Attach a. 270 DR LH and RH (left hand and right hand) to drawer sides, inserting rear horizontal tab into back square hole. Line up center and front tabs with matching square holes and snap **up** into place. Repeat with remaining drawers.

5. Insert c. (male slides) fully into channel of inner panel slides so that spring at back of unit faces drawer and front spring faces inner panel. See Fig. 11. Make sure spring stop is engaged. (This prevents drawer from being pulled all the way out of unit).

6. Starting at bottom, pull male slides, left and right, partially out—align drawer to male slides—insert male slides into drawer slides and firmly push drawer all the way in for engagement. Repeat with remaining drawers.

Ball-Bearing Slides

Each drawer requires one ball-bearing slide set consisting of one right and one left hand triple member ball-bearing slide. See Fig. 12.

Note: Large side of slide attaches to inner panel while smaller member detaches and then is fixed to drawer. Both have one horizontal and one vertical facing locking tab.

1. Start at the bottom row of square holes on right side inner panel. Insert rear horizontal tab (closest to black plastic detente) on large member into back square hole. Align front tab with matching square hole and snap **down** into place, locking in the slide. (**Note:** If front tab faces up, you incorrectly have the left side slide).

2. Repeat procedure, moving up the panel—every other row.

3. Repeat above procedures 1 and 2 on left side panel.

4. Starting at bottom of right side panel, fully extend slide small member (drawer side). Depress plastic release lever and remove member. Install it on drawer right side by inserting rear horizontal tab into drawer rear square hole. Align front tab to matching hole and snap **up** into place, locking in the slides.

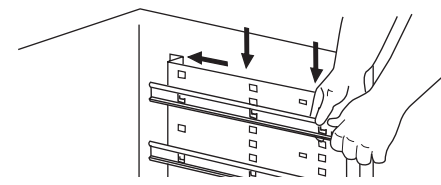
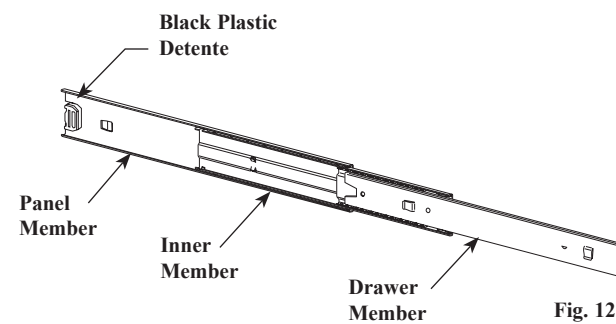
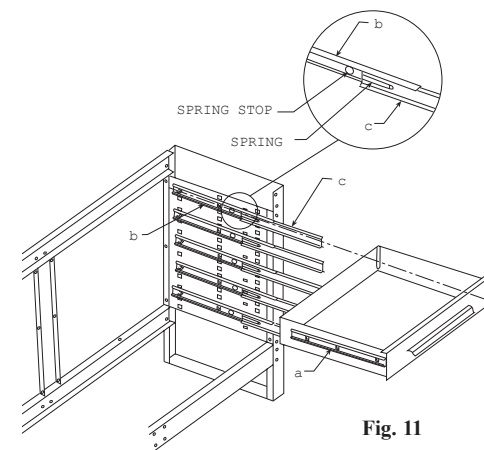
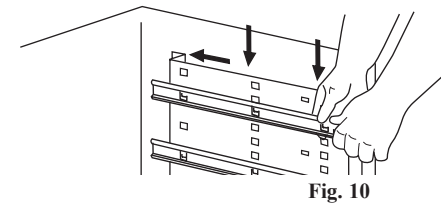
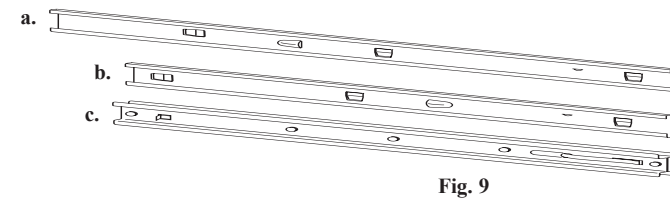
5. Repeat procedure on left side of drawer.

6. Align drawer slide members with inner panel slides, inserting them back into place. Push drawer evenly all the way into slide and pull out to make sure slide members are correctly joined.

7. Repeat procedures 4, 5 and 6 with remaining drawers, moving toward the top.

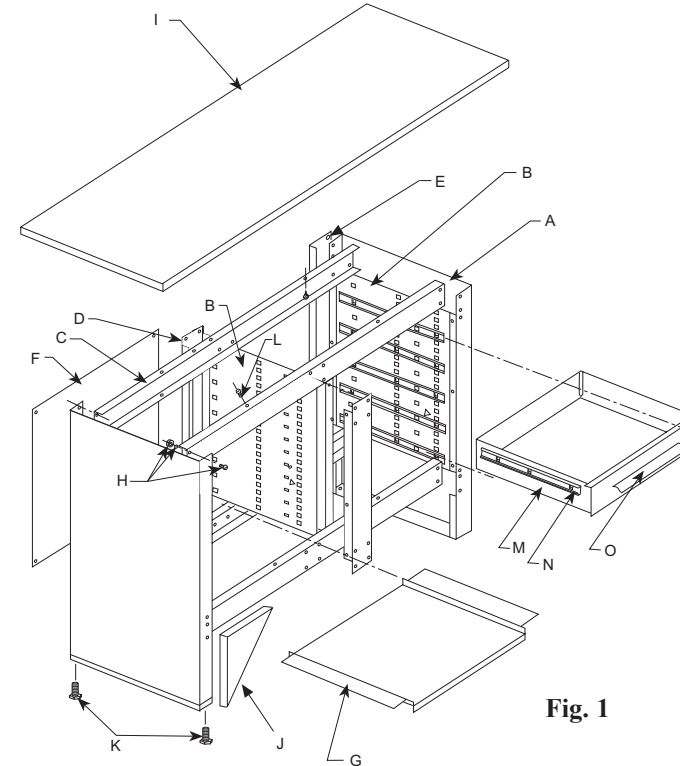
Step 11. Install Drawer Pulls

1. Attach drawer pulls (O)—see Fig. 1—with two hex head slotted screws (P) per drawer, using a flat-tip screwdriver.



WORK STATION ASSEMBLY INSTRUCTIONS

STYLE NO. WW5405, W5405X, WS5405, S5405X WW5410, W5410X, WS5410, S5410X



BEFORE ASSEMBLY OF YOUR WORK STATION
Check carefully to ensure that all parts listed below are included. If any are missing, please call 1-800-413-8665 and ask for the Sales Department. Do not discard packing material until assembly is complete.

TOOLS REQUIRED

Flat Tip Screwdriver—Main Assembly
7/16" Open End Wrench or Socket Wrench—Main Assembly
3/8" Open End or Socket Wrench—Steel Top Assembly
Drill and 5/32" Drill Bit—Top Pilot Hole—Wood Top Assembly
Square

To order additional drawers for models WW5405, W5405X, WS5405, S5405X refer to your Kennedy Catalog:
• Five drawers with two inner walls, catalog no. DR265 with friction slides; catalog no. DR265X with ball-bearing slides.

CAUTION
DO NOT SLIDE OR MOVE UNIT FULLY LOADED.
MAY RESULT IN DAMAGE OR INJURY.

Models WW5405, W5405X, WS5405, S5405X
Parts Check List 5-Drawer Models

KMC Packer	User	Key	Qty	Parts Description
		A	2	End Panels
		B	2	Inner Panels
		C	4	Rails
		D	2	Center Support
		E	1	Drawer Stop
		F	2	Back Wall Panel
		G	2	Shelves
		H	60	1/4" x 1/2" Bolts, Lock Washers, Hex Nuts
		I	1	Bench Top (WT54 or ST54)
		J	4	Corner Brace
		K	4	Adjustable Leg Leveler
		L	4	#14-5/8" Hex Screws used for Bench Assembly (Maple Top)
		M	5	Drawer
		N	1	Friction Slide Pack 490546 or Ball-Bearing Slide Pack 492142 (Used with "X" Models)
		O	5	Drawer Pulls
		P	10	#8-18 x 3/8" Hex Head Sheet Metal Screw (not shown)

Models WW5410, W5410X, WS5410, S5410X
Parts Check List 10-Drawer Models

KMC Packer	User	Key	Qty	Parts Description
		A	2	End Panels
		B	4	Inner Panels
		C	4	Rails
		D	2	Center Support
		E	2	Drawer Stop
		F	2	Back Wall Panel
		G	2	Shelves (Not required w/10-Dr. Unit)
		H	60	1/4" x 1/2" Bolts, Lock Washers, Hex Nuts
		I	1	Bench Top (WT54 or ST54)
		J	4	Corner Brace
		K	4	Adjustable Leg Leveler
		L	4	#14-5/8" Hex Screws used for Bench Assembly (Maple Top)
		M	10	Drawer
		N	2	Friction Slide Pack 490546 or Ball-Bearing Slide Pack 492142 (Used with "X" Models)
		O	10	Drawer Pulls
		P	20	#8-18 x 3/8" Hex Head Sheet Metal Screw (not shown)

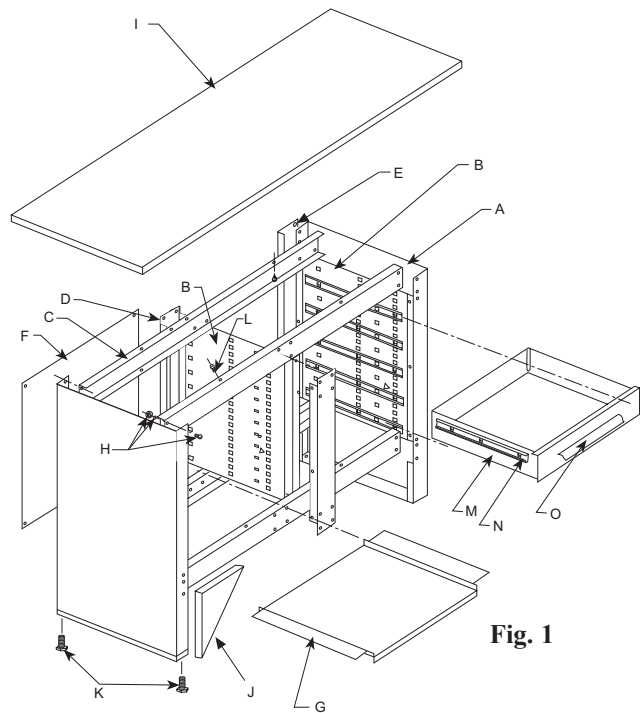


Fig. 1

For Model Nos. WW5405, W5405X, WS5405, S5405X

Qty.	Key	Parts Description
2	(A)	End Panels
2	(B)	Inner Panels
4	(C)	Rails
2	(D)	Center Support
1	(E)	Drawer Stop
2	(F)	Back Wall Panel
2	(G)	Shelves
60	(H)	1/4" x 1/2" Bolts, Lock Washers, Hex Nuts
1	(I)	Bench Top (WT54 Maple or ST54 Steel)
4	(J)	Corner Brace
4	(K)	Adjustable Leg Leveler
4	(L)	#14-5/8" Hex Screws Bench Assembly (Maple Top)
5	(M)	Drawer
1	(N)	Friction Slide Pack 490546 or Ball-Bearing Slide Pack 492142(Used with "X" Models)
5	(O)	Drawer Pulls
10	(P)	#8-18 x 3/8" Hex Head Sheet Metal Screw (not shown)

For Model Nos. WW5410, W5410X, WS5410, S5410X

Qty.	Key	Parts Description
2	(A)	End Panels
4	(B)	Inner Panels
4	(C)	Rails
2	(D)	Center Support
2	(E)	Drawer Stop
2	(F)	Back Wall Panel
2	(G)	Shelves (Not required with 10-drawer unit)
60	(H)	1/4" x 1/2" Bolts, Lock Washers, Hex Nuts
1	(I)	Bench Top (WT54 Maple or ST54 Steel)
4	(J)	Corner Brace
4	(K)	Adjustable Leg Leveler
4	(L)	#14-5/8" Hex Screws Bench Assembly (Maple Top)
10	(M)	Drawer
2	(N)	Friction Slide Pack 490546 or Ball-Bearing Slide Pack 492142(Used with "X" Models)
10	(O)	Drawer Pulls
20	(P)	#8-18 x 3/8" Hex Head Sheet Metal Screw (not shown)

Step 1. INNER PANEL/CENTER SUPPORT/RAIL ASSEMBLY

Attach one Inner Panel (B) to each Center Support (D) using (2) Fasteners (H) for each support as shown in Fig. 2. Arrow ▷ on inner panel points toward front of assembly.

NOTE: Ten drawer models require (2) Inner Panels (B) to be attached to Center Supports (D)—See Fig. 2A.

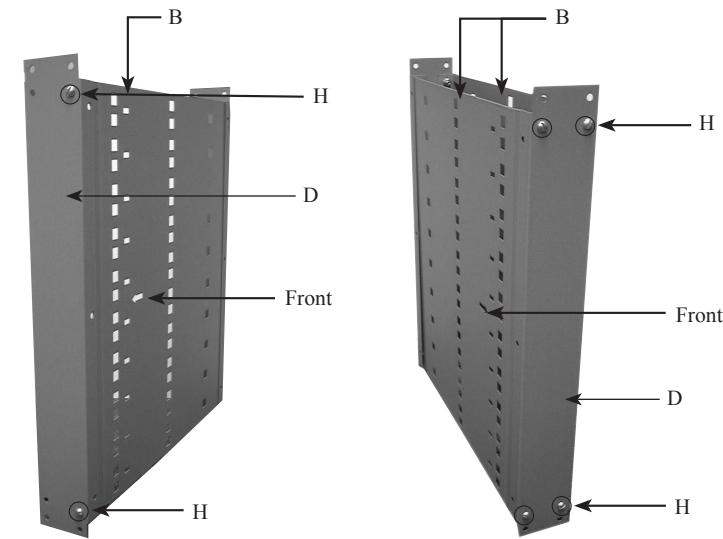


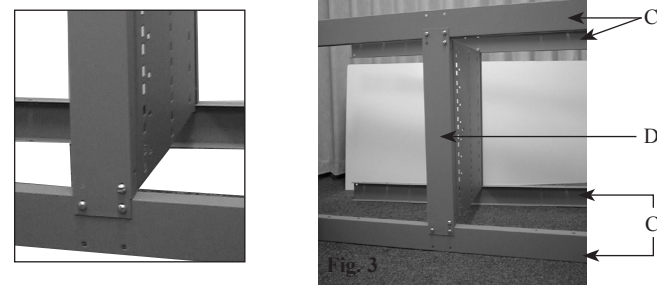
Fig. 2
Assembly for
5-drawer models

Fig. 2A
Assembly for
10-drawer models

Step 2. RAILS/CENTER SUPPORT ASSEMBLY

Attach (4) Rails (C) to Center Supports (D) as shown in Fig. 3 with (8) Fasteners (H).

NOTE: Rail containing brand logo should be at top front. Position bottom rails so that side with six holes faces floor.



Step 3. END PANEL/INNER PANEL ASSEMBLY

1. Insert remaining Inner Panel (B)* into End Panel (A) as shown in Fig. 4. **NOTE:** Arrow ▷ on inner panel points to front of assembly.

2. Attach Inner Panel (B) to End Panel (A) at the front on top and bottom with (2) Fasteners (H).

NOTE: Do not attach back fasteners at this time.

*Ten-drawer models have two additional inner panels that attach to center supports and left side end panel.

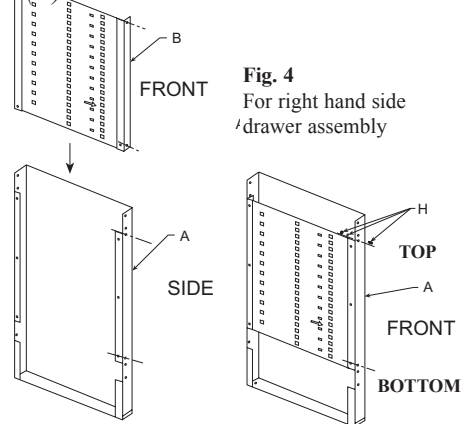


Fig. 4
For right hand side
/drawer assembly

Step 4. RAIL ASSEMBLY TO END PANELS

Insert Rails (C) into top and bottom notches of each End Panel (A) as shown in Fig. 5. Attach with (16) Fasteners (H). Tighten nuts finger tight until assembly is checked for square alignment. Tighten with wrench.

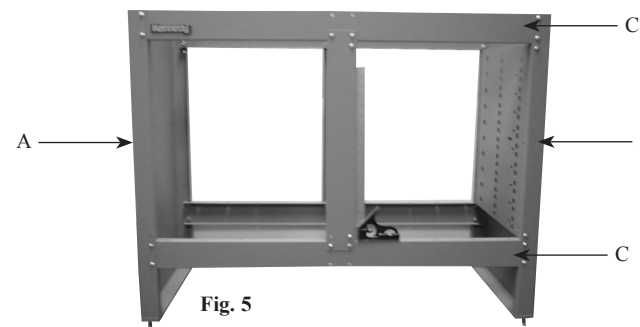


Fig. 5

Step 5. CORNER BRACE TO FRAME ASSEMBLY

Place assembled frame top side down on level surface. Align holes and attach (4) Corner Braces (J) to End Panels (A) and Bottom Rails (C) as shown in Fig. 6. Sixteen Fasteners (H) used.

Return assembly to upright position.

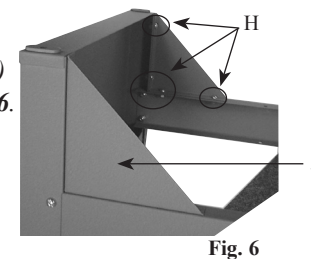


Fig. 6

Step 6. SHELF TO FRAME ASSEMBLY

Place Shelf (G) on bottom rails as shown—wide flange of shelf is on right side—see Fig. 1, Fig. 7. Align holes with holes in end panels and center supports. Attach with (4) Fasteners (H) front and back. Repeat with second shelf as shown in Fig. 7.

Note: Discard shelves if assembling a 10-drawer model.

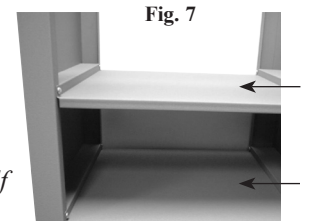


Fig. 7

Step 7. DRAWER STOP AND BACK PANEL ASSEMBLY

1. Attach Drawer Stop (E) between End Panel (A) and Back Panel (F) as shown in Fig. 1, Fig. 8 aligning holes in all four pieces (F, E, A, B). Attach the four pieces at top and attach back panel to center support at top with Fasteners (H).

2. Attach second back panel at top in the same manner.

Note: Five-drawer models have only one drawer stop. Ten-drawer models have two (one for each side).

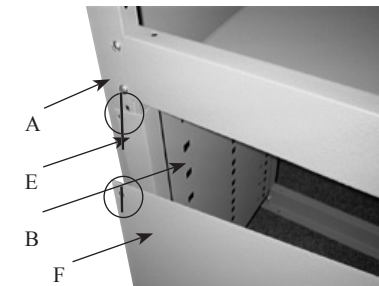


Fig. 8

3. For ease of assembly, turn unit upside down to attach bottom fasteners as in 1 and 2 above. Leave unit upside down.

Step 8. LEG LEVELERS

Attach adjustable leg levelers as shown in Fig. 1. Leave unit upside down for next step.

Step 9. TOP ASSEMBLY

Note: Have another person help you with top assembly.

WT54 Wood Top:

1. Place work surface side of top facing down on level surface.
2. Center frame (upside down) on wood top. Make sure frame sides are squared up (at right angles) to the rails. Locate frame on top to fit your needs. (Recommend 1" wood top overhang at front).
3. Mark hole locations on wood top through the holes in the top rails. Move frame aside and drill four 5/32" dia. x 1/2" deep holes in top. Do not drill deeper than 1/2".
4. Place frame assembly on wood top, aligning rail holes over drilled holes. Attach frame with four hex screws (L).

5. Wrench tighten all screws and nuts.

6. Turn assembled bench right side up and level as needed.

ST54 Steel Top Assembly:

1. Place work surface side of top facing down on level surface.
2. Place upside down frame on steel top rail supports. Make sure frame sides are squared up (at right angles) to the rails. Align holes in frame rails over threaded holes in rail supports. Attach with four 1/4" bolts/lock washers (H).
3. Wrench tighten all screws and nuts.
4. Turn assembled bench right side up and level as needed.