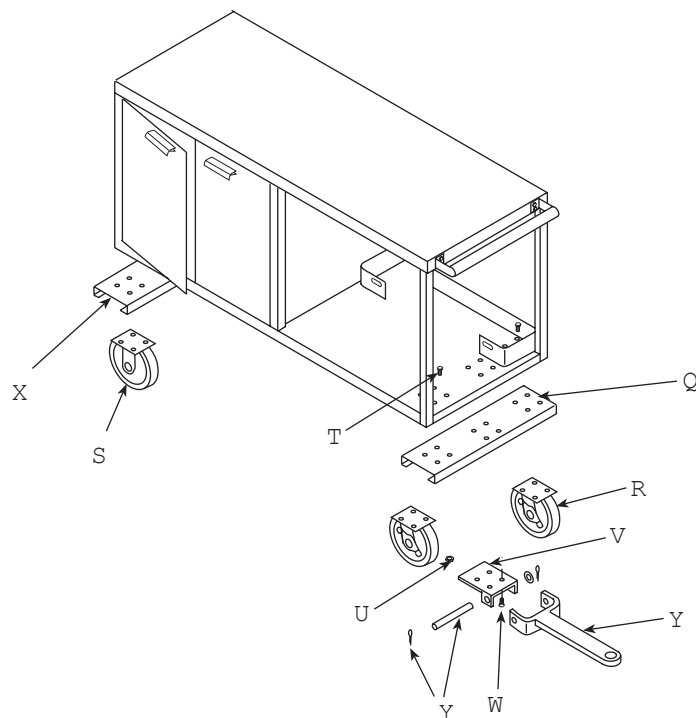


## Versa-Bench® Towing Package Assembly Instructions

Note: To be used in conjunction with Versa-Bench Assembly Instructions



### ASSEMBLY SUPPLY LIST

QTY	KEY	PART DESCRIPTION
1	(Q)	Bottom pan front reinforcement with cross plate (has 3 sets of bolt hole piercings)
2	(R)	Swivel Casters
2	(S)	Rigid Casters
16	(T)	3/8" x 1-1/2" Hex Head Bolts
16	(U)	3/8" Lock Nuts
1	(V)	Tongue Plate
4	(W)	3/8-16 x 1" Bolts
1	(X)	Rear bottom pan reinforcement (has 2 sets of bolt hole piercings)
1	(Y)	Towing tongue, pin, (2) cotter keys

With Versa-Bench laying on back, proceed as follows:

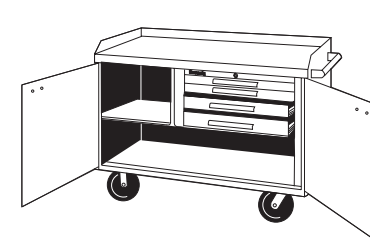
1. Position the front reinforcement with cross plate (Q) under front of bench as shown, aligning the bolt holes of both the front reinforcement and bench. Fasten the swivel casters (R) and the front reinforcement to the bench with (8) 3/8" x 1-1/2" hex head bolts (T) and (8) 3/8" lock nuts (U). Bolt heads should be inside the bench, lock nuts below the caster plate.
2. Bolt tongue plate (V) to the front reinforcement cross plate with (4) 3/8-16 x 1" bolts.
3. Align towing tongue (Y) tongue plate (V), insert pin and hair pin (Y).
4. Fasten the rear bottom pan reinforcement (X) and rigid casters (S) to the bench with remaining 3/8" bolts and lock nuts.
5. Set the bench upright and proceed with instruction number (7) of the Versa-Bench Assembly Instruction on previous page.

Thank you for purchasing this Kennedy product. We produce value-built products for value conscious users. We welcome any comments or suggestions you may have. Just call or write the address below. We hope you will continue to find Kennedy the most complete source for your tool storage needs.

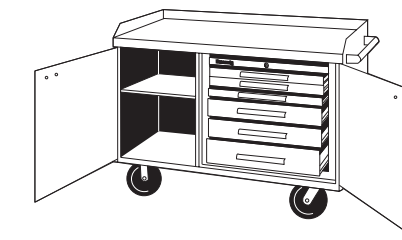
**Kennedy**  
Since 1911

**VERSA-BENCH®**  
**ASSEMBLY INSTRUCTIONS**

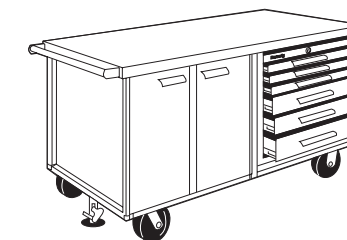
### STYLE NUMBERS—



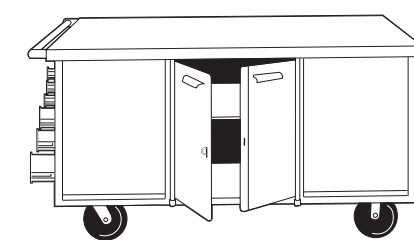
4804



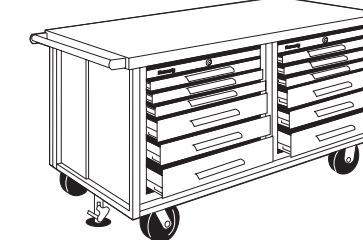
4806



6006



6012E



6012S

### BEFORE ASSEMBLY OF YOUR VERSA-BENCH®

Check carefully to ensure that all parts listed on the reverse side are included. If any are missing, please call 800-413-8665 and ask for the Sales Dept. Do not discard packing material until assembly is complete.

### TOOLS REQUIRED

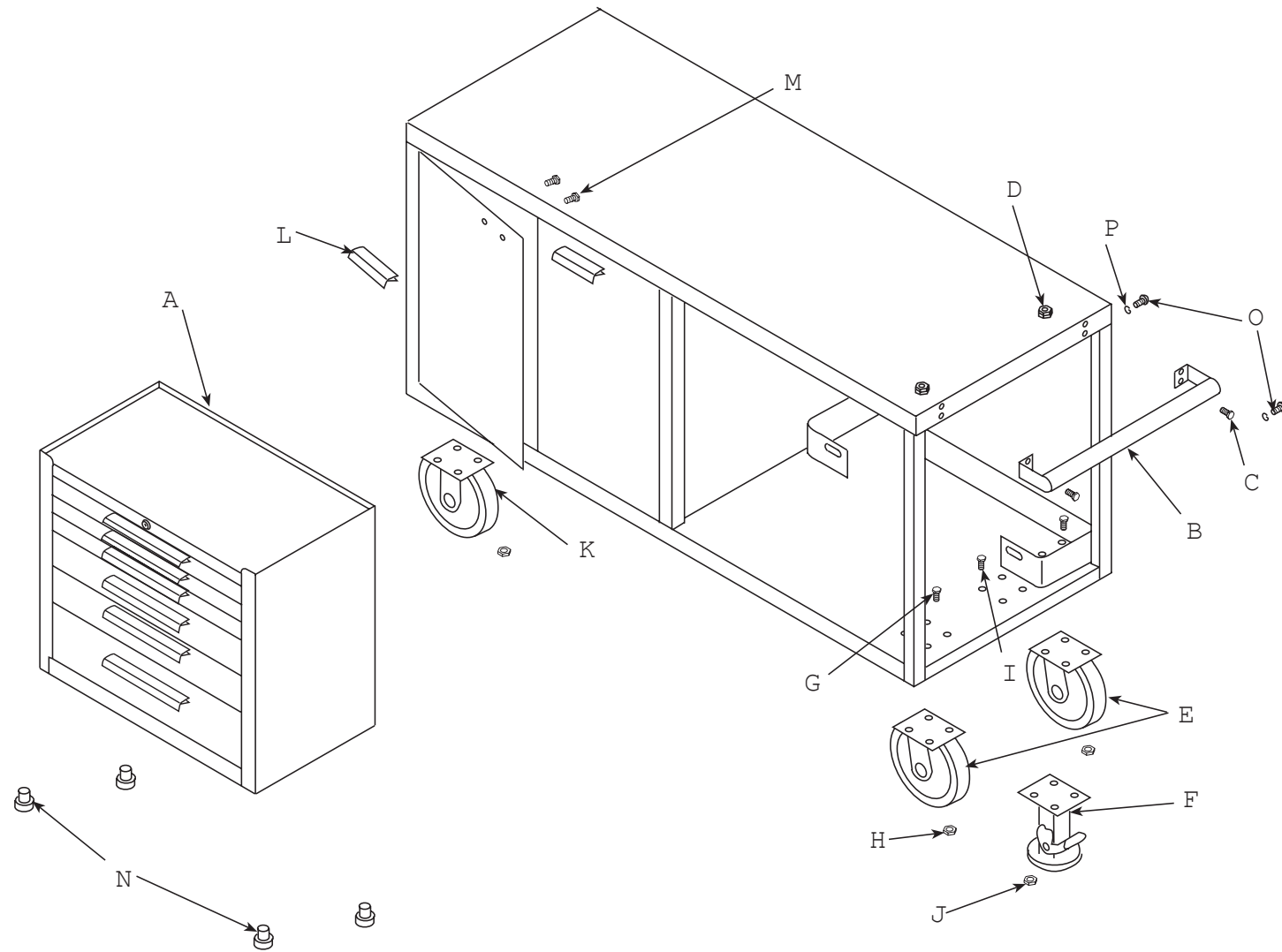
Flat tip screwdriver  
7/16" Open end wrench or socket wrench  
9/16" Open end wrench or socket wrench

KMC Holdings LLC dba Kennedy Manufacturing Company  
1260 Industrial Drive • Van Wert, OH 45891  
Phone 800-413-8665 • Fax 419-238-5644 • www.kennedymfg.com

Part No. 527034, Rev. 8/07

## Versa-Bench® Assembly Instructions

**Note:** For towing package assembly, refer to assembly instructions on back page.



### ASSEMBLY SUPPLY LIST

KEY	PART DESCRIPTION	MODEL NUMBER					
		4804	4806	6006	6012E	6012ED	6012S
A	Kennedy Tool Chest	0	1	1	2	2	2
B	Chrome Plated Push Handle	1	1	1	1	1	1
C	1/4" x 3/4" Hex Head Bolts	4	4	4	4	4	4
D	Double Head Nut	2	2	2	2	2	2
E	8 x 2" Swivel Casters	2	2	2	2	2	2
F	Floor Lock	1	1	1	1	1	1
G, I	3/8 x 3/4" Hex Head Bolts	20	20	20	20	20	20
H, J	3/8" Hex Lock Nuts	20	20	20	20	20	20
K	8 x 2" Rigid Casters	2	2	2	2	2	2
L	"L" Shaped Aluminum Door Handles	2	2	4	4	8	2
M	1/2" Hex Head Screws	4	4	8	8	16	4
N	White Plastic Feet	0	4	4	8	8	8
O	1/4" x 3/4" Round Head Screw	0	2	2	4	4	4
P	Washer	0	2	2	4	4	4

1. Remove tool chest(s) (A) from Versa-Bench, set aside. **Does not apply to model 4804.**

2. Fasten chrome push handle (B) to end of bench as shown using (4) 1/4" x 3/4" hex head bolts (C) and (2) double head nut (D). **Note:** 4804, 4806 push handle assembles to left ends into extruded holes with 1/4" thread cutting bolt.

3. Lift bench with a fork lift or lay on its back on shipping carton to install swivel casters (E) and floor lock (F). Remove bolts from wood shipping blocks from inside bottom of the Versa-Bench.

4. Fasten swivel casters (E), as shown, at the same end as the push handle (B) with (8) 3/8" x 3/4" hex bolts (G) and (8) 3/8" lock nuts (H). Bolt head should be inside bench, lock nut under bench.

5. Fasten the floor lock (F), as shown between the swivel casters (E) with (4) 3/8" x 3/4" hex bolts (I) and (4) 3/8" lock nuts (J). Bolt head should be inside bench, lock nut under bench.

6. Fasten rigid casters (K) to opposite end of bench with (8) 3/8" x 3/4" hex bolts and (8) 3/8" lock nuts. Carefully set bench upright.

7. Fasten each door handle (L) to each door with (2) 1/2" hex head screws (M). Center the handle on the two holes provided in the door. Fasten the screws thru the holes into the base of the handle.

8. **Tool chest installation:** Does not apply to model 4804. Remove tool chest(s) (A) from carton(s). Supplies are in an envelope in a drawer.

9. Snap (4) plastic feet (grommets) (N) in place, up thru the four holes in the bottom of each tool chest.

10. Slide tool chest into position inside the bench and fasten with (2) 1/4" x 3/4" round head screws (O) with washers (P) thru the slots in bench compartment wall into the threaded holes in the tool chest back.