



COMBINATION PUSH BUTTON LOCK

Your Push Button Combination Lock is preset with a combination of: 2-4-3.

Note: Before pushing the combination, turn knob left (counter-clockwise), then enter individually 2, 4 and 3. Should anyone have attempted an improper combination, this action clears off such attempt and reactivates the buttons.

To Open Lock:

1. Turn knob left (counter-clockwise) to activate all buttons.
2. Push proper buttons in present order for the combination.
3. Turn knob right (clockwise) to open.

To Lock:

1. Turn knob left (counter-clockwise) until it stops.

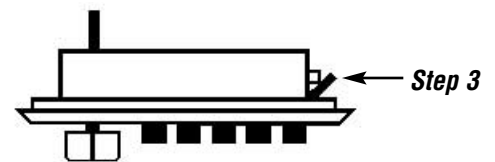
To Change Your Combination:

You may easily change to a new combination, using one or all five, or any combination of the buttons. It is recommended to use individual buttons for new combinations. Two and three button combinations are easy to remember and still provide security.

NOTE: A particular button can be pushed only once in establishing a new combination. Record your new combination and keep in a safe place.

Steps to Change Combination:

1. Remove the top two drawers (refer to general assembly instruction) and relock your combination lock.
2. Press the correct buttons in the proper order for your existing combination.
3. On the side of the combination lock, opposite the knob end there is a plate covering a button. Push the plate inward. **See lock sketch.**
4. Turn knob left (counter-clockwise) to "clear out" existing combination.
5. Press the buttons firmly in the desired sequence for your new combination.
6. Turn the knob right (clockwise) to set your new combination into the lock. Turn the knob full left. Your new combination is now installed.



RECORD NEW COMBINATION:

1. _____
2. _____
3. _____
4. _____
5. _____
6. _____
7. _____
8. _____
9. _____
10. _____
11. _____
12. _____